

Chapter	Appendix	Title
15	Appendix 15.1	Maps
	Appendix 15.2	Littoral and Sublittoral Flora and Fauna
	Appendix 15.3	Previous Studies
	Appendix 15.4	Biotype Descriptions
	Appendix 15.5	Photographs
	Appendix 15.6	Granulometry, LOI, Heavy Metals
	Appendix 15.7	Dúchas Site Synopsis

APPENDIX 1. MAPS

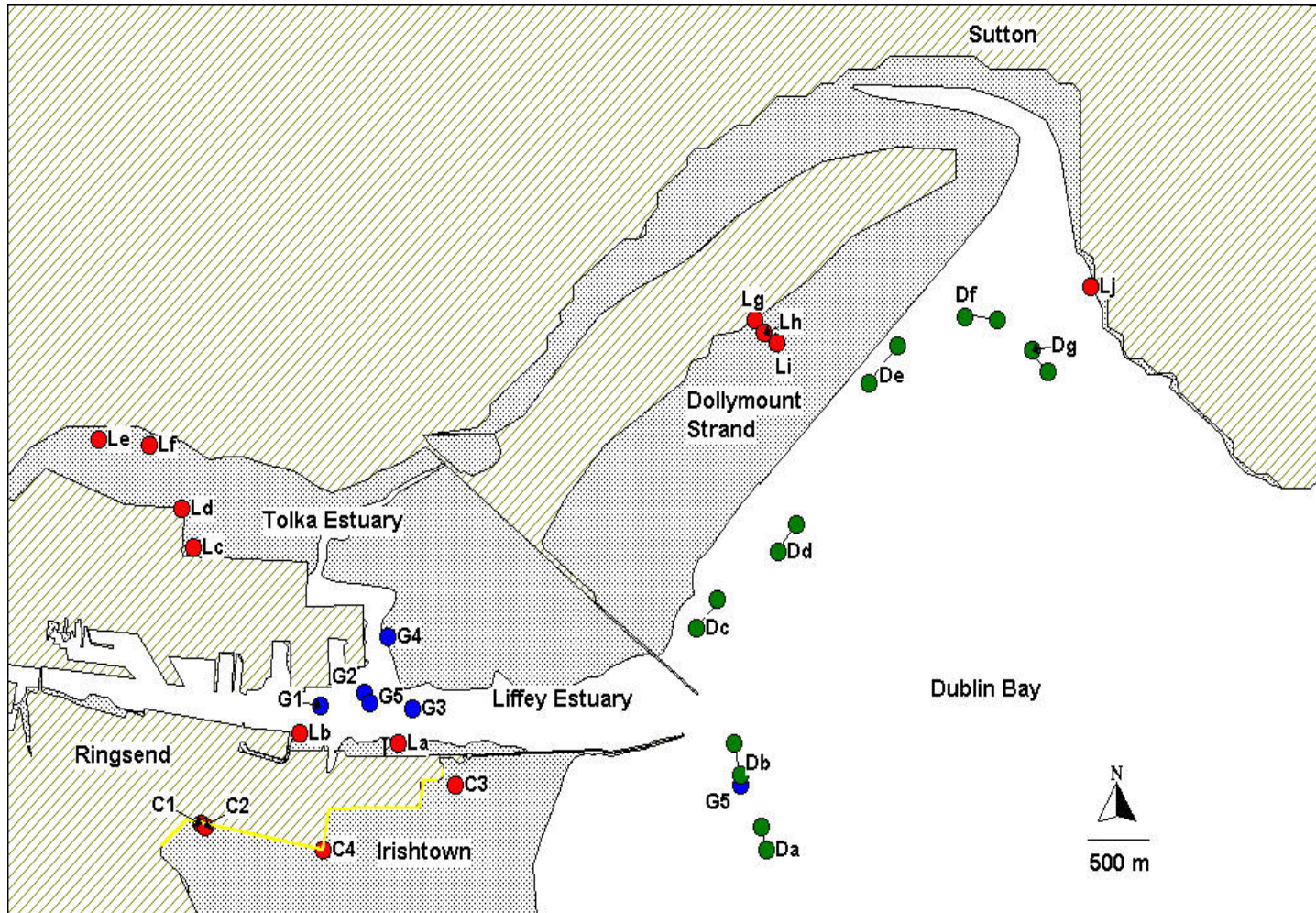


Figure 1.1 Locations of the littoral sites (La-Lj, C1-C4 red dots), the grab sample sites (G1-G6 blue dots) and the dredge sites (Da-Dg green dots) of the present survey. The extent of the Irishtown biotope survey area is shown as a yellow line.

1.

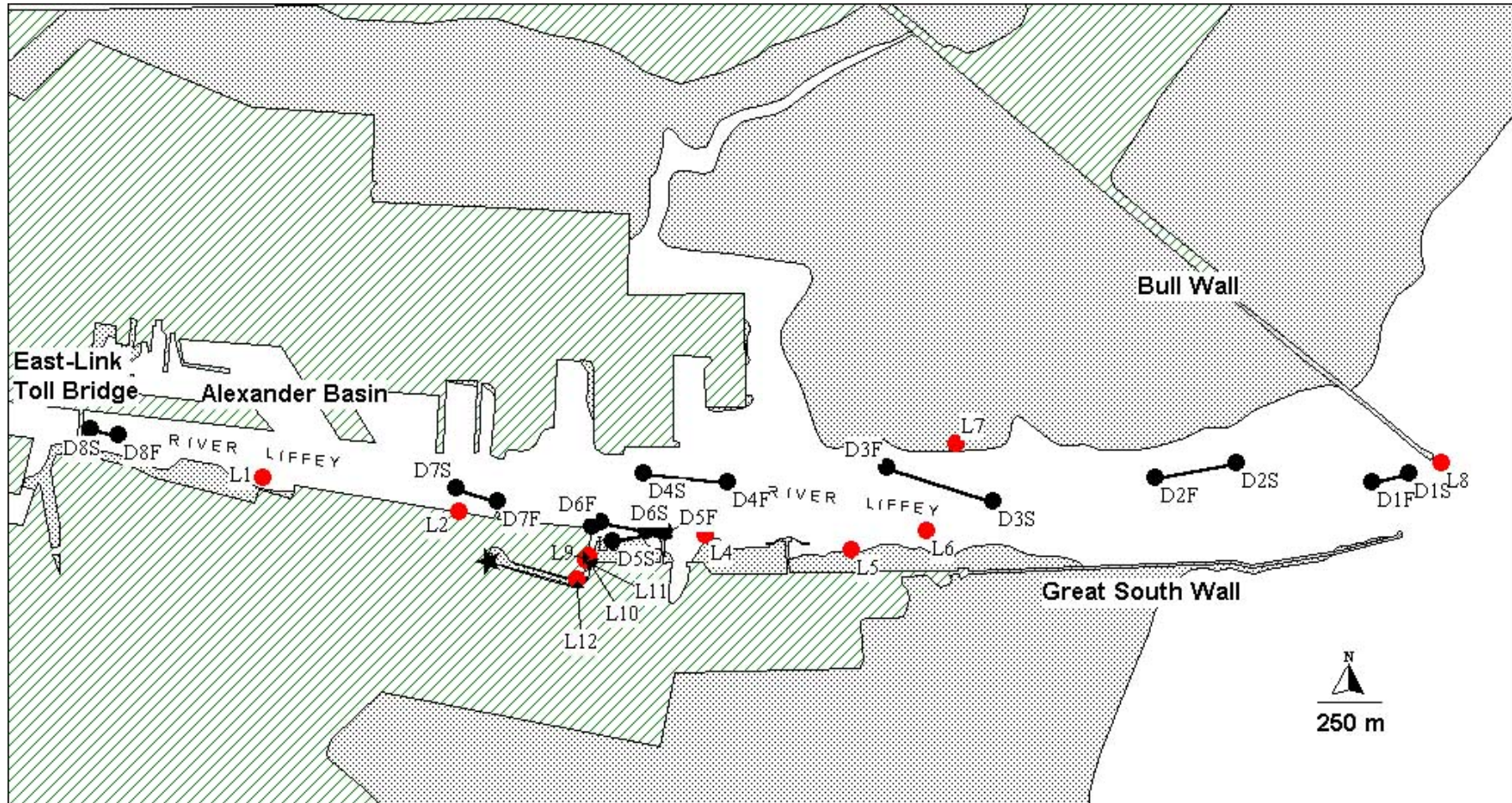


Figure 1.2 Locations of the sampling sites of the 1998 Liffey estuary survey for the combined cycle power station EIS. Littoral sites (L1-12 red dots), sublittoral dredges (D1-D8 black dots where S is start and F is finish point of dredge)



Figure 1.3 Biotopes of the western section of the Irishtown study area. Littoral core samples C1, C2, C4 are shown as red dots. Colours represent lower biotope codes. Biotopes are described in Appendix 4.

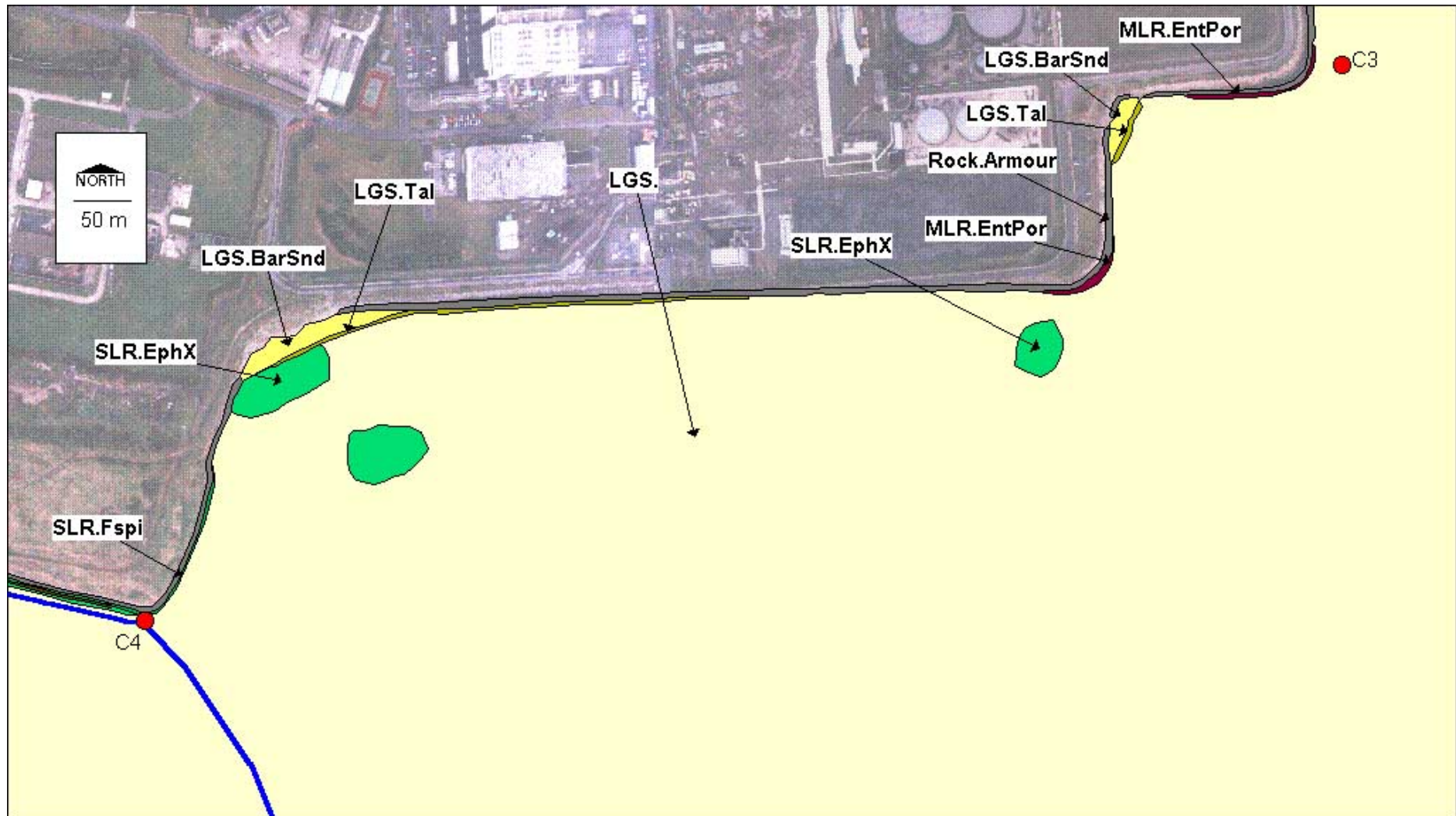


Figure 1.4 Biotopes of the eastern section of the Irishtown study area. Littoral core samples C3, C4 are shown as red dots. Colours represent lower biotope codes. Biotopes are described in Appendix 4.

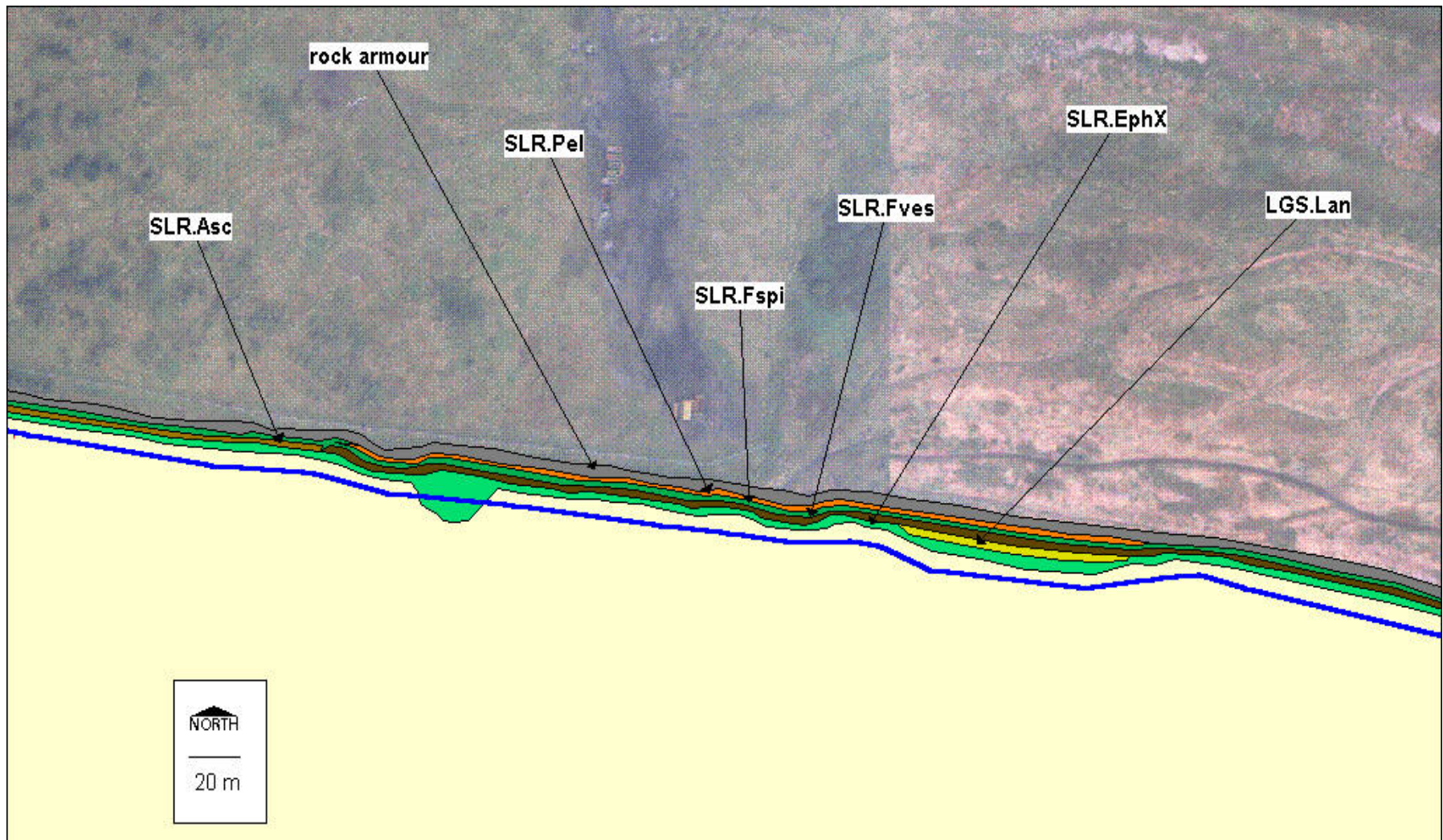


Figure 1.5 A close up of a section of biotopes illustrating typical biotopes present along the Irishtown study area. Colours represent lower biotope codes. Biotopes are described in Appendix 4.

